



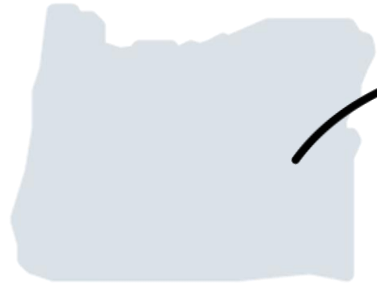
Integrating Land Use, Transportation Planning, and Climate Goals

Mike McKeever, Strategic Partner, Cascadia Partners

November 15th, 2022



My Background

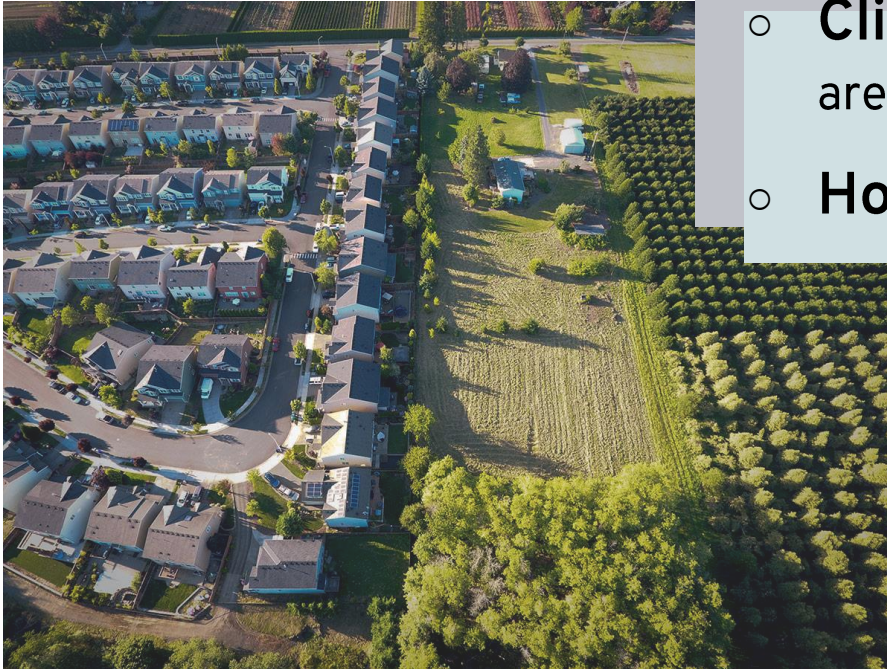


Oregon – state planning law



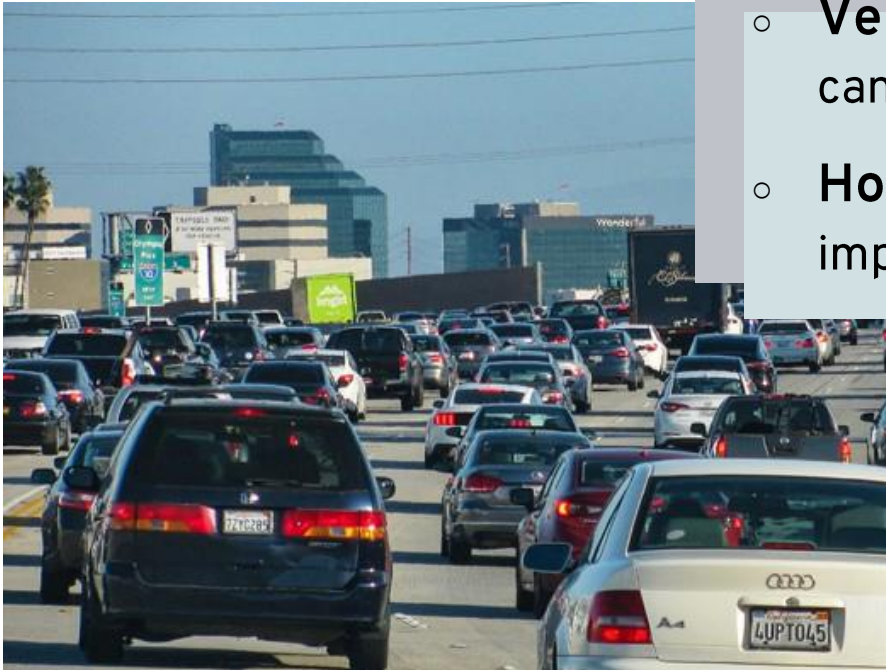
California – CEQA

My Theory of the Case



- **Climate Change** and **Social Equity** are the 2 defining challenges of our time
- **Housing** is essential part of solving both

Housing and Climate Change



- **Vehicle Miles Traveled Enemy #1** – can't tame w/o right housing pattern
- **Housing pattern** also determines climate impacts from infrastructure, buildings, etc.

Must do Better at Quantity and Quality (Type, Placement) of Housing



- **Targeted changes** to local standards, decision processes important
- **Aligning funding** across levels of government and subject areas essential

Must Have Integrated, All Hands On Deck, Commitment



- Boundaries of all types are the problem
- **Coordination, alignment, teamwork essential**



Thank You

Mike McKeever

Strategic Partner, Cascadia Partners