



# FEDERAL GRANT ASSISTANCE

The Importance of Relationship Building in Disaster Preparedness & Recovery

*October 31, 2024*

**Geoffrey Ross**

Director | HORNE

[Geoffrey.Ross@horne.com](mailto:Geoffrey.Ross@horne.com)

[HORNE.COM](https://www.horne.com)

# Preparedness

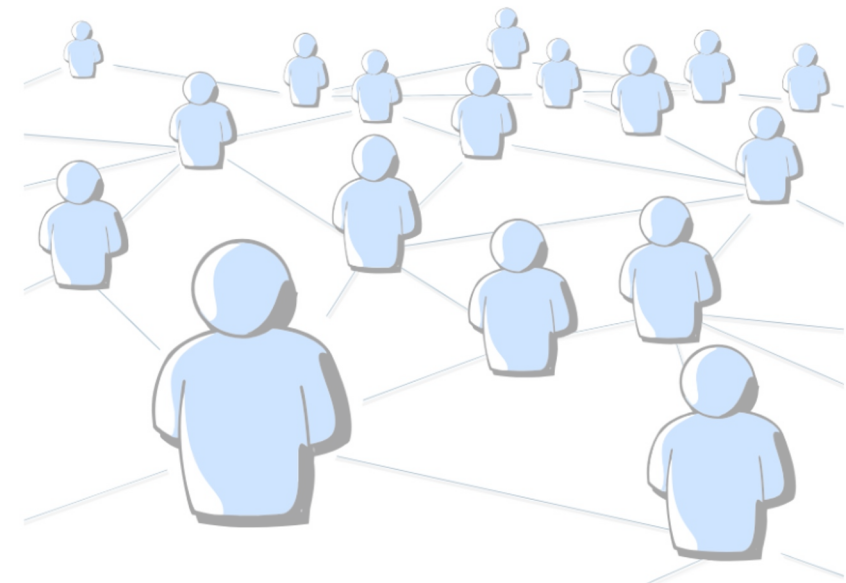
---

## Strategic Growth Council – Connecting Communities Initiative

- To support the California Strategic Growth Council's (SGC) current grantees and unawarded applicants with grant writing assistance and other tailored resources.
- To support a vast array of community-driven priorities, including extreme heat mitigation, workforce development, and other climate resilience projects eligible for funding through US EPA's grant funding under the Inflation Reduction Act.
- The aim of the program is to accelerate community-led climate projects statewide and demonstrate best practices in centering communities burdened by pollution and other structural harm.
- The program also aims to advance strategic collaborations with the philanthropy sector and other private funding sources to further enhance investment into underserved communities across the state.



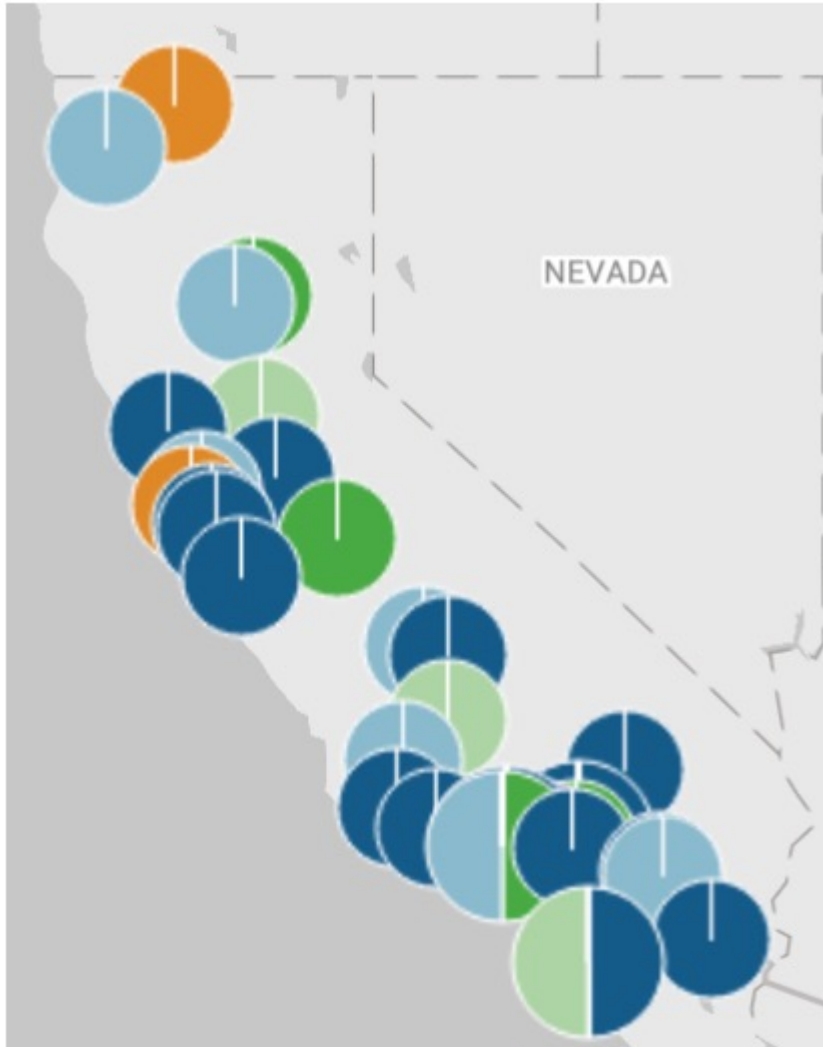
CALIFORNIA STRATEGIC  
GROWTH COUNCIL



HORNE

# Technical Assistance

---



● Outreach ● Initiation ● Active TA ● Submitted ● Awarded ● Non-Awarded

Technical assistance has been provided to over 60 applicants across four different Federal Grant Programs

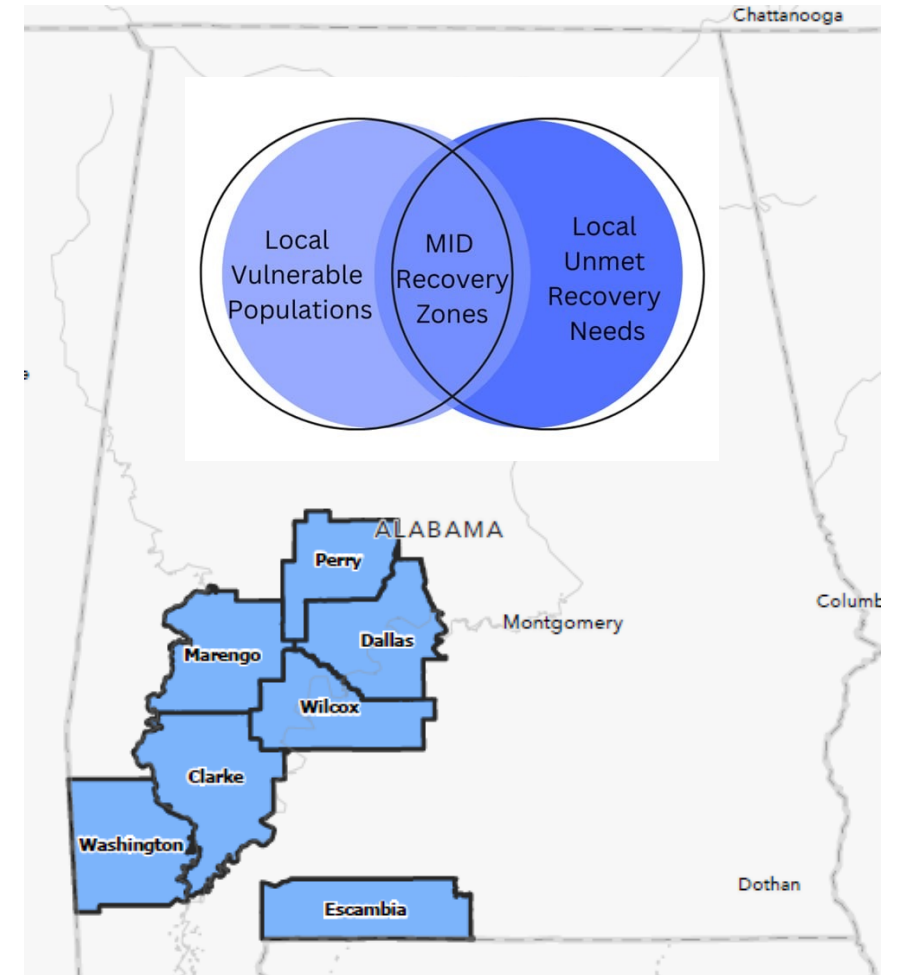
- EPA Community Change Grant
  - Submitted over \$250M
  - \$60M awarded since July
- FEMA Building Resilient Infrastructure and Communities (BRIC)
- USDOT Reconnecting Communities Pilot Grant (RCP)
- USDOT Rebuilding American Infrastructure with Sustainability and Equity (RAISE)

# Recovery & Mitigation

The Alabama Department of Economic and Community Affairs (ADECA) established the Local Recovery Planning Program (LRPP) to provide support to local governments to plan for an expedited and equitable recovery.

The Local Recovery Plans (LRP) developed ensure CDBG-DR funding benefits areas with:

- High levels of Remaining Unmet Recovery and Mitigation Unmet Needs
- High concentrations of Vulnerable Populations



# Partnerships

---



# Types of Projects

---

