



# Creative Funding Solutions

*For Local Climate, Energy and Land Use Projects*

**3/12/26 | CivicWell Policymakers Conference**

## SESSION OUTLINE

- 1. PANELIST REMARKS**
  - Angie Hacker, Prosper Sustainably (Moderator)
  - Kirin Kumar, Greenlining Institute (recorded)
  - Adam Parris, ICF
- 2. PANEL DISCUSSION AND AUDIENCE Q&A**
- 3. TABLE DISCUSSIONS**



**CIVICWELL**

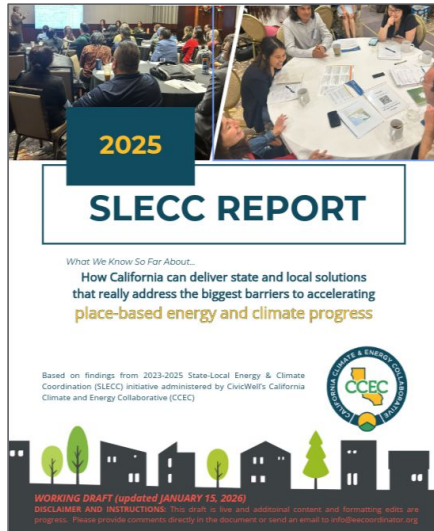
# ANGIE HACKER

CEO, Prosper Sustainably

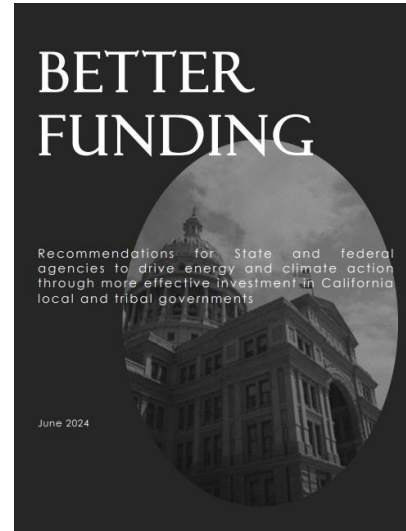
Senior Policy & Practices Consultant



[CA Tribal Gap Analysis \(2025\)](#)



[2025 SLECC Report WORKING DRAFT](#)



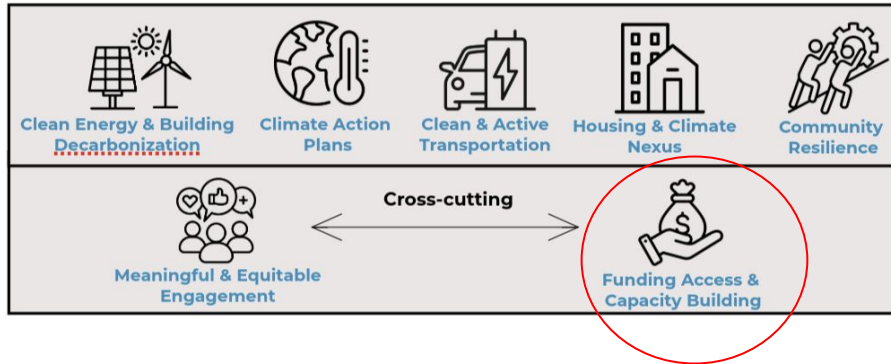
[Better Funding \(2024\)](#)

## ACCESS REPORTS



# What's Holding Back Place-Based Progress

## SLECC Report Findings



### Barrier 1: Insufficient Investment

Significant budget and funding constraints at local, state and federal levels prevent adequate investments and capacity in needed energy, climate and land use strategies.

### Barrier 2: Unstable Assistance

Fluctuations in federal and state politics and budgets result in funding and technical assistance opportunities for local and place-based efforts that are often offered on a one-time basis and do not recur at predictable intervals, and are not reliably available.

### Barrier 3: Application Burden & Accessibility

Competitive public grant applications are overly complex, confusing, and inflexible pass/fail processes that are oversubscribed with little standardization, extracting limited organizational capacity that could be used for action while creating prohibitively high costs and low success probabilities that discourage resource-constrained organizations from attempting to apply.

### Barrier 4: State & Federal Funding Priorities

State and federal funding priorities often misalign with local needs, favoring rigid rules, reactive approaches, and shifting policies that undermine innovation, certainty, and community-driven solutions.

### Barrier 5: Political, Economic, & Structural Risks

When outdated tax systems, fragmented governance, and political or financial mistrust shape funding, communities face unstable revenues and limited access to resources needed for long-term solutions.

### Barrier 6: Capacity Building

Local, tribal, and regional entities lack sustained funding, staffing, and representation to engage effectively in state planning implementation, leading to fragmented efforts, inequitable participation, and missed opportunities to build long-term, community-driven capacity.

## Priority 2: STREAMLINED FUNDING & IMPLEMENTATION

*Streamlining funding access and implementation support for community-driven climate action plans and clean energy, efficiency and decarbonization initiatives in difficult times*

# Creative Funding Solutions

## From who?

### STATEWIDE

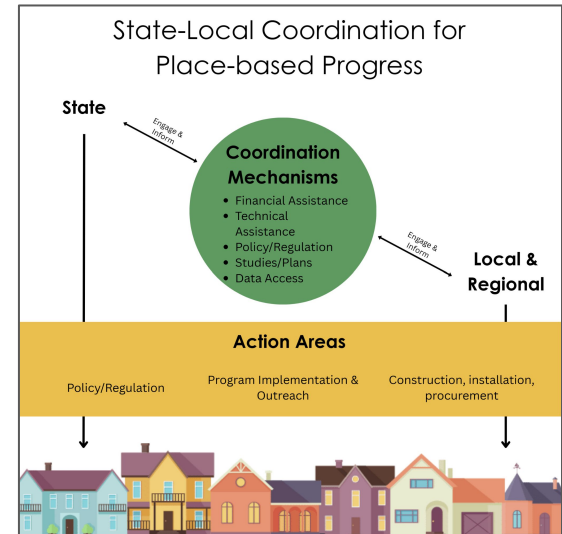
- **Federal and State agencies**
  - Grants, incentives, and other agreements
    - Cap-and-Invest (\$4B/yr via CARB's CCI and 100 agency programs)
    - Energy Efficiency (\$2B/yr via CPUC)
    - Prop 4 (\$10B over 10 yrs)
    - Recurring or one-time agency programs
    - Mitigation Funds (CEQA VMT, SB 54 \$5B over 10 yrs)
  - Debt instruments (IBank, CAEATFA, etc)
  - Tax credits
- **National or statewide NGOs/Philanthropy**
- **National or statewide financiers**

### REGIONAL

- **Local governments (develop revenues)**
  - Tax increment financing/ Climate Finance Districts
  - Bonds
  - CCAs (e.g. programs for EVs, heat pumps, microgrids)
- **Local NGOs/Philanthropy**
- **Local financiers** (CDFI, Credit Unions)

## For who?

- **Community-serving organizations (cities, counties, COGS, regional collaborations, CBOs, etc)**
- **Community members (res./commercial/ag properties, fleets, infrastructure, etc)**



# Creative Funding Solutions

## MODELS

### Bottom Up

- Lift to Rise: Capital Absorption Framework
- Clean Power Alliance and SoCalREN: Community Grants
- Cal Poly: Sustainable Lands Initiative

### Top Down

- ICLEI: Municipal Investment Fund
- Milkin: Community Infrastructure Center: 10,000 Communities
- COGs: Transportation project pipelines

### Same Formula:

Regional TA + Evergreen Central Project Pipeline + Coordinated Funding

# Creative Funding Solutions

## HOW WE'RE HELPING



- **CCEC's State and Local Energy and Climate Collaborative**
  - Priority 2 (SGC facilitates)
  - Regional Energy and Climate Hubs (REACH)
  - Assistance Marketplace - pursuing funding to pilot regional TA + pipeline
  
- **CivicWell's Policy Bridge**
  - February 9th - included panel on this topic
  - Playbook with community-driven policy concepts
    - Consolidated Climate Assistance Model & Workgroup

# *Creative Funding Solutions*

**KIRIN KUMAR**

Vice President of Policy, Greenlining Institute



# *Creative Funding Solutions*

**ADAM PARRIS**

Senior Director for Climate Resilience, ICF



# *Creative Funding Solutions*

## **PANEL DISCUSSION AND AUDIENCE Q&A**

1. Reflect back on the examples of transformative funding solutions you have observed. What are some of the themes or shared characteristics of funding needs and solutions?
2. Elected officials can implement plans by not taking a project-by-project approach but instead thinking strategically. Please provide an example of cross-sector partnerships that demonstrate this.

# *Creative Funding Solutions*

## **TABLE DISCUSSIONS**

1. What is some expertise you bring from your day job, training, or work experiences relevant to creative funding solutions?
2. How can you serve as a power broker in your community? How can you leverage your leadership roles, (e.g. on a municipal planning organization, air district, transit agency, joint powers authority, or similar entity), to encourage cross-jurisdictional collaboration or state policy reforms?
3. What pathways do you see for moving ahead on your community's funding-related challenges?

# Creative Funding Solutions

## TABLE DISCUSSIONS

1. ID a Stuck Project at your table to workshop
  - a. Housing
  - b. Energy
  - c. Climate Resilience
  - d. Transportation
2. Discuss system challenge
  - a. Where did the project get stuck?
  - b. What ways can this project get unstuck? Please share successes
  - c. What system change would have helped?
3. What role can local elected leaders play?



# Creative Funding Solutions

## Report Out & Takeaways

